



**WE MANAGE ALL DAMAGES®**





## Cemil ISLIKÇI

Bimtes was founded in 1987, and our service mind-set has not changed ever since. Our approach has always been: “achieving the impossible”. Today, we are moving forward with the same goal and are just as meticulous. Thanks to our valued customers’ and insurance companies’ trust in us, we are growing day by day in a professional manner and we are honored to provide our services to you.

*Sincerely,*

## OUR CERTIFICATES



TS EN ISO 9001-2000  
Quality Certificate



TSE Service Adequacy  
Certificate

1987

BİMTES E-LAB was founded to provide technical services in electronic and computer domains.

1992

BİMTES started to render professional services in data recovery industry.

1995

BİMTES HG unit was established to provide post-disaster restoration services.

2002

BİMTES began co-operating with the globally renowned BELFOR.

TODAY

With its expert staff and strong experience, BİMTES continues to provide the most dedicated service possible to its customers.

## OUR REFERENCES

- Akdeniz Şifa Hastanesi
- Alen Yacht
- Algida
- Allianz Sigorta
- Anadolu Sigorta
- Arçelik
- Axa Sigorta
- Bosch-Siemens
- Camiş Ambalaj
- Capitol AVM
- Cımbız Gece Kulübü
- Cinefora
- Colgate Palmolive
- Corinthia Group
- Crowne Plaza İzmir
- Çanakale Seramik&Kalebodur
- Dionysos Hotel
- ECA Valfsel Armatür
- Eczacıbaşı Vitra Karo
- Entil A.Ş.
- Ereğli Demir Çelik Fabrikaları
- Eureko Sigorta
- Finansbank
- Ford Otosan
- Generali Sigorta
- Gulf Sigorta
- Hapalki A.Ş.
- Havaş
- HDI Sigorta
- Heidelberg Grafik
- HSBC Bank
- IBM Türkiye
- İlkay Kağıtçılık
- Inox Çelik Yapı
- Kalevit Roca Saniter Seramik
- Linde Gaz
- Mekisan Asansör
- Mesan Enerji-Hidroelektrik Santrali
- Metro Gross Market Samsun
- Mirage Park Resort
- MNG Bank
- Modern Karton
- Omsan Lojistik
- Otokoç Otomotiv
- Oyak-Renault
- Özel An-Deva Yıldız Hast.
- Palmali Otel
- Panur Tekstil
- Pfizer
- Pınar Süt Mamulleri
- Piaggio&Figli SRL
- Polifarma Serum
- Procter&Gamble
- Sabah Gazetesi
- Samet Kalıp ve Madeni Eşya
- SBN Sigorta
- Sony Europe
- Sur Yapı A.Ş.
- Şahin Motor Yatakları
- Şişecam
- Şölen Çikolata
- T.C. Devlet Planlama Teşkilatı
- T.C. Milli Eğitim Bakanlığı
- Trakya Cam Sanayii
- TAV Enerji Üretim Tesisi
- Tchibo
- Timay&Tempo
- Tria Sigorta
- Triko Mısırlı
- Turcom Teknoloji
- Turktrust
- Tür-İp Tekstil Sanayii
- Türk Telekom
- Türkiye İş Bankası
- Uğur Tekstil Makinaları
- Unico Sigorta
- Unilever
- Vodafone
- Yapı Kredi



**BİMTES E-LAB**, was founded in 1987 to provide technical service for computers and electronic devices. Since our very first day, we have aimed to closely follow technological advances and restore all kinds of damaged electronic device to prevent losses. As we left 30 years behind, we have become the leading company in our field. We provide emergency solutions for all kinds of business, commercial and resi-

dential damages with BİMTES HG (BİMTES Damage Recovery) unit we established in 1995. BİMTES HG repairs post-disaster damages in residential, commercial or industrial areas. Our goal is to repair and reconstruct as fast as possible and at the lowest cost. Our cooperation with world-renowned restoration firm BELFOR in 2002 increased our strength in both industrial and residential restorations.





## **DAMAGE RESTORATION**

---

Every year BİMTES HG department handles various damage restoration cases, including mechanical and electronic damages caused by unpredictable emergencies such as fire and flood. We help businesses resume their work as fast as possible with a fully recovered state.



## **ELECTRONIC SUPPORT**

---

As well as technical service and protective periodic maintenance for all personal computers, servers, and medium-sized systems, BİMTES E-LAB also provides repair services for all commercial and industrial electronic cards and devices.



## **DATA RECOVERY**

---

BİMTES E-LAB is a leader in data recovery industry with its pioneering solutions. We provide professional data recovery services for all kinds of electronic and digital recording platforms.

# DAMAGE RESTORATION





## WE MANAGE ALL DAMAGES

- When damages occur, regardless of the type or magnitude of the disaster, BİMTES E-LAB can be trusted with fast and reliable solutions to have businesses resume operation promptly.
- BİMTES Damage Recovery Department, BİMTES HG implements precise procedures promptly and at lowest possible costs to recover and repair damaged infrastructure and devices.
- BİMTES HG has consistently won the confidence of our clients with experienced operations on small to large scale fire and flood damages with years-long experience, dedicated personnel for round-the-clock service, and industry-first priority assessments for maximum recovery in shortest amount of time possible.
- BİMTES E-LAB, with its existing infrastructure, is one of the most prominent companies in Turkey. The first of its kind in the region, the Mobile Laboratory was designed by BİMTES E-LAB and specially manufactured. All devices and machinery are cleaned, repaired and recovered inside the Mobile Laboratory promptly by specialists without the need to be transported to outside laboratories.



**BİMTES™** 

**BELFOR** 

# FIRE DAMAGE RESTORATION





## WE TURN BACK THE TIME

- BİMTES HG firstly prevents growth in fire damage with a timely and conscious intervention, therefore significantly increasing the recovery rate.
- In the events of fire damage, BİMTES HG begins with soot and wreckage removal from the affected site.
- The specialists, then, quickly alleviate the smoke and soot damage caused by the fire, as well as promptly executing steps to minimize the oxidation and possible water damage at the site.
- BİMTES HG guarantees the removal of soot, smut and other contaminants from buildings and machines following the fire damage.

### Salvage

Apart from the repair of damaged machinery, movable goods, fixtures and commodities, BİMTES HG also deals with value-adding activities. The components claimed by the insurance company in exchange for their cost are often disadvantaged for resale due to their damaged state. Their restoration plays an integral role in adding value to the insurance company's claim. During this operation, BİMTES HG assists the insurance companies with storage of the items, their display to prospective clients, and resale of these goods at their correct market value. BİMTES HG cooperates with insurance companies by bidding for and buying salvage items.



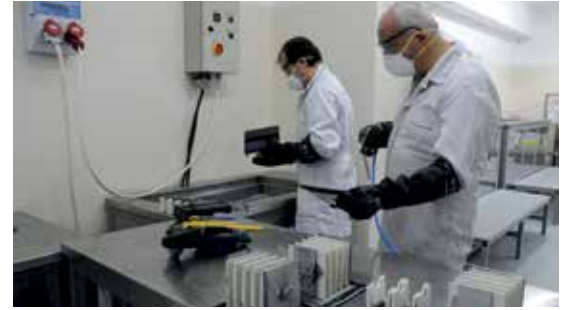














## FIRE DAMAGE RESTORATION / Project samples

BEFORE



AFTER



BEFORE



AFTER





BEFORE



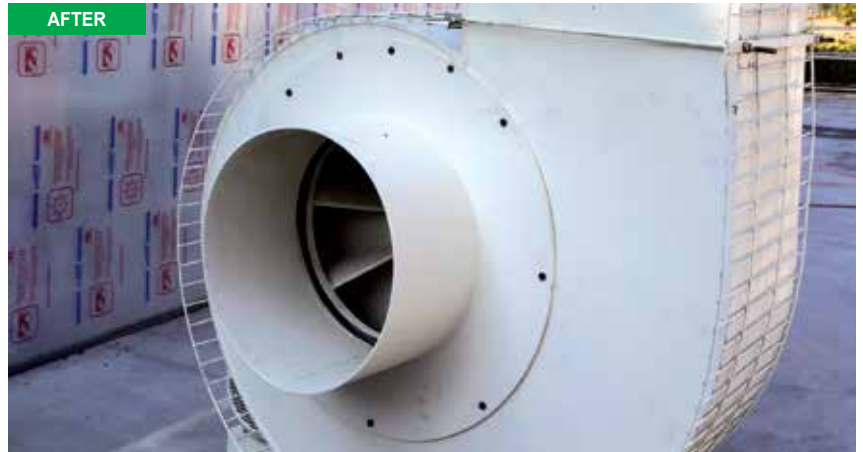
AFTER



BEFORE



AFTER



## FIRE DAMAGE RESTORATION / Project samples

BEFORE



AFTER



BEFORE



AFTER





BEFORE



AFTER



BEFORE



AFTER





# WATER DAMAGE RESTORATION



## IMPOSSIBLES ARE MADE POSSIBLE

---

- In cases of water damage from floods, heavy rain, storms or pipe bursts, the first thing to do is to act immediately and seek professional help.
- Following a flooding incident, the priority should be to prevent damage that will occur due to mud, acidic substances and bacteria carried by contaminated water.
- BİMTES HG provides water damage restoration services ranging from removal of water and mud, recovery and drying of machinery, furniture and other valuables from the affected site.
- With its facility of 24 dedicated water pumps, the infrastructure of BİMTES HG has the capacity to drain 2000 cubic meters of water from all types of damaged sites at a given time.
- BİMTES HG uses ultrasonic bath boilers for chemical cleaning of the damaged site. The most important feature of these boilers is the 25-40kHz ultrasonic power plants located at the base and sides.
- By means of magnetic field, damaged components are purified of all debris and rust that may be present. Specially trained BİMTES HG personnel use BELFOR manufactured chemicals for this procedure.



**BİMTES™** 

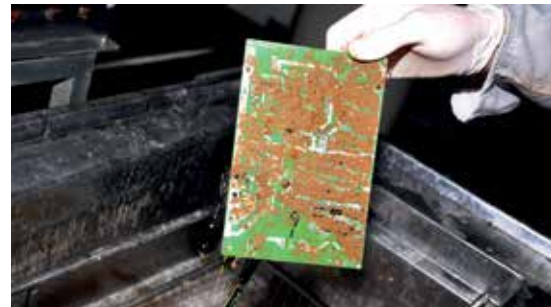
**BELFOR** 















## WATER DAMAGE RESTORATION / Project samples

BEFORE



AFTER



BEFORE



AFTER





BEFORE



AFTER



BEFORE



AFTER



## WATER DAMAGE RESTORATION / Project samples

BEFORE



AFTER



BEFORE



AFTER





BEFORE



AFTER



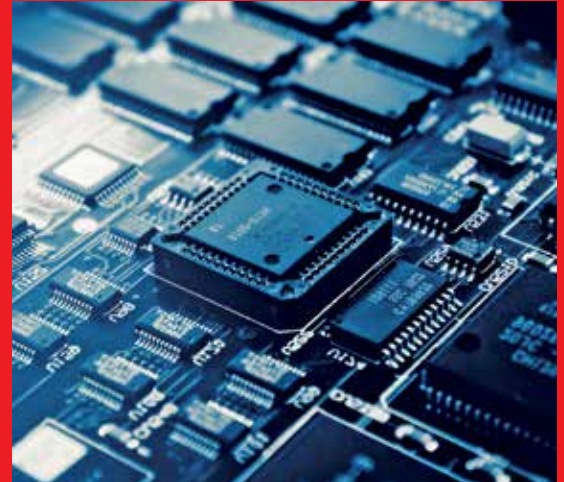
BEFORE



AFTER



# ELECTRONIC SUPPORT





## WE VALUE YOUR TIME AND LABOR

---

- Along with providing technical service and protective periodic maintenance for personal computers (PC), servers and hardware and peripheral units of medium-sized systems, BİMTES E-LAB also delivers authorized technical service, authorized maintenance center and guarantee services for the producers and distributors of this kind of electronic devices.
- BİMTES E-LAB's technical services include component/integrated electronic card and device repair, repair and maintenance services within 24-48 hours, unique traceability and reporting system and providing services all around Turkey.
- BİMTES E-LAB's services include new systems' installation, network setups and installation of related electronic and data systems, expanding or upgrading current systems and contracting/consulting services regarding program setup/update and software support.
- Additionally, our company provides technical service to companies under Information Technologies and Maintenance contracts or without any contract.
- BİMTES E-LAB has ISO 9001:2000 Quality Certificate and TSE Service Competence Certificate.



# DATA RECOVERY

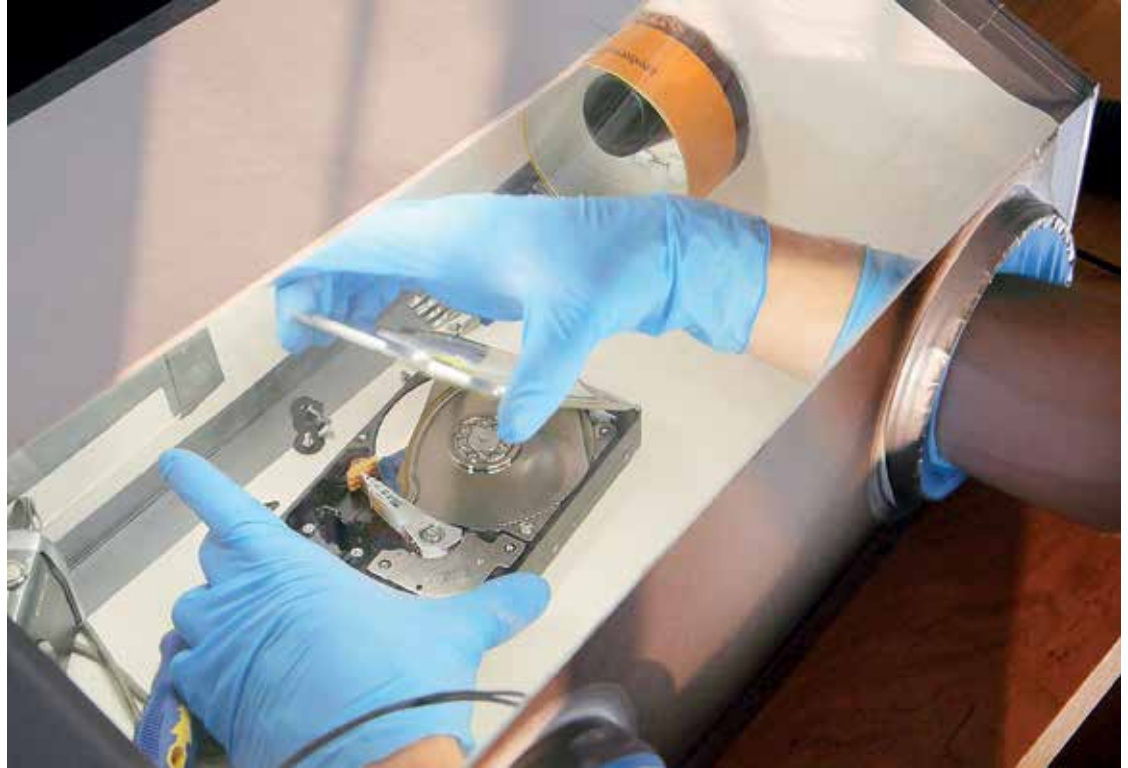




## DATA RECOVERY IS BİMTES E-LAB'S BUSINESS

---

- Data Recovery is restoring lost, deleted by mistake, broken or inaccessible data. It requires in-depth technical knowledge about data structures and how data platforms work, experience, software and tracking.
- Data recovery process changes depending on conditions of data loss, data recovery software used for recovering data and back-up target platform. As data saving platforms have very sensitive structures, data recovery processes need to be carried out in special work areas.
- Providing data recovery services from flash memories to RAID devices, BİMTES E-LAB is the leader of this field.
- Clean Room is a specially designed laboratory for data recover and precision device repairs. BİMTES E-LAB carries out its data recovery and repair work in the electronic discharge area of Clean Room where the air is cleansed from particles, and a homogenous and controlled temperature is set.
- After a fire or flood disaster, BİMTES E-LAB also offers data recovery services that prioritize customer needs and satisfaction with its professional manner and latest software and hardware solutions.





**+90 (212) 444 4 621**

**BIMTES ELECTRONIC LABORATORIES, A.Ş.**

Hurriyet Mah. Dr. Cemil Bengu Cad. Derebasi Sok. No:1/A-B Kagithane 34403 Istanbul / TURKEY

Tel: +90 (212) 234 42 06 - Faks: +90 (212) 230 48 39 - [info@bimtes.com.tr](mailto:info@bimtes.com.tr)

**[www.bimtes.com.tr](http://www.bimtes.com.tr)**